

Reminders about our IWD masterclass and BrokerHub Pricing Tool.



Westpac will never send you a link directly to our sign in page, or request your personal or financial information. Always type [westpac.com.au](https://westpac.com.au) into your browser or use the Westpac mobile banking app to securely sign in. More Info - [visit westpac.com.au/hoaxemails](https://westpac.com.au/hoaxemails)  
[View Online](#)



# JOIN US FOR OUR INTERNATIONAL WOMEN'S DAY WEBINAR



## It's starting soon – don't forget to join.

Hi, our International Women's Day virtual masterclass – 'Power of Purpose' with Jennie McLaughlin from Purpose Led Transformation is starting at **1:00pm (AEDT, Sydney time)** today.

### What's on the agenda:

In this session, Jennie will unpack what being a purpose-led business means through compelling case studies and the latest global research, bringing to life how you can authentically activate purpose in your business.

#### What we'll cover:



- What is purpose and what does purpose-led mean.
- The link between purpose and performance.
- Why great talent is attracted to purpose-led brands.
- Consumer appetite for purpose-led brands.
- How to apply purpose to become a purpose-led business.

MFAA and FBAA points will be allocated and provided at the end of the session.

### How to register and access event:

1. To register for the session, click on the following link on your computer or mobile device: [Westpac View](#).
2. You will need to provide your first name, last name, and email address.
3. Once you have registered, your personalised password and link to the briefing will be emailed to you from 'Westpac View' ([events@westpacview.com.au](mailto:events@westpacview.com.au)).

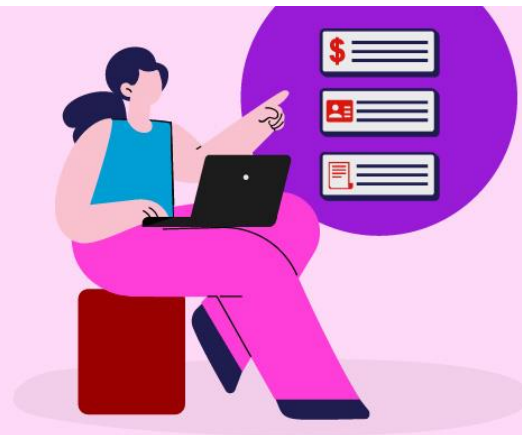
Please do not delete the Westpac View email as you will need to refer to the link and your password closer to the event time.

## Are you aware of the newly enhanced BrokerHub Pricing Tool?

### Dive in today.


To experience the enhanced BrokerHub Pricing Tool yourself and to view the how-to videos, simply log in to BrokerHub today.

[Learn more](#)



### We're here to help.

 [westpac.com.au/brokers](https://westpac.com.au/brokers)

 [1300 130 928](tel:1300130928)  
(8:30am - 7:00pm AEST)

### Accessibility support.

At any time, you can inform us how you would prefer to be contacted. If you are deaf and/or find it hard hearing or speaking with people who use a phone, you can reach us through the National Relay Service (NRS). To use the NRS, you can register here: <https://www.infrastructure.gov.au/media-communications-arts/phone/services-people-disability/accesshub/national-relay-service>

Visit [Westpac Access and Inclusion](#) for further information on our accessible products and services for people with disability.

*Westpac acknowledges the traditional owners as the custodians of this land, recognising their connection to land, waters and community. We pay our respects to Australia's First Peoples, and to their Elders past and present.*



### Things you should know

Based on Westpac's credit criteria, residential lending is not available for Non-Australian resident borrowers. More information available at [westpac.com.au/brokers](https://westpac.com.au/brokers).

This communication is intended for the recipient only and is not for distribution to your customers or any member of the general public. The information contained in the email is current as at Tuesday 05 March 2024. For more information on any of the promotions, products or services mentioned in this email, please contact your local Business Development or Lending Manager. This email is to be used as general information only and should not be considered a comprehensive statement on any matter and should not be relied upon as such. This email has been prepared without taking into account any individual objectives, financial situation or needs.

### Westpac Secure Security Reminder:

Westpac will never send you a link that directly opens our sign in page, or any links requesting your personal or financial information. Always type [westpac.com.au](https://westpac.com.au) into your browser or use the Westpac mobile banking app to securely access your banking. For more information visit [westpac.com.au/hoaxemails](https://westpac.com.au/hoaxemails). Before accessing emails or the Internet, always ensure your computer has up-to-date security software. Find tips to protect yourself and avoid scams and viruses at [westpac.com.au/security](https://westpac.com.au/security).

Westpac sent this message to Connective Lender Services Pty Ltd at [product@connective.com.au](mailto:product@connective.com.au). These details are included to help provide assurance that this is a genuine email from Westpac.

This is a service message sent by Westpac for the purpose of communicating factual information relating to our products or services. An unsubscribe option is not available due to the nature of this message.

If any of the information related to (or provided by) the Westpac Group that you rely on is printed, downloaded or stored in any manner on your systems, files or otherwise, please ensure that you update your systems and files with the most up-to-date information provided by us and rely only on such updated information.

© 2024 Westpac Banking Corporation ABN 33 007 457 141 AFSL and Australian credit licence 233714.

The Westpac Group, 275 Kent Street, Sydney, NSW 2000, AUSTRALIA.

[Privacy](#)